

HIRE • SALES • REPAIR • REFURBISH



ARONSON 30 TONNE ADJUSTABLE-HEIGHT WELDING POSITIONER HIRE PLANT SPECIFICATIONS

MAKE: ARONSON

MODEL: HD600 30 TONNE CAPACITY ADJUSTABLE HEIGHT FRAME MODEL

MAXIMUM TILT / ROTATION CAPACITY OF 'BALANCED' LOAD (TO PREVENT TIPPING / PARTS FAILURE)

MAX LOAD ROTATION CAPACITY ON 180° FLAT HORIZONTAL TABLE: 30,000Kg

MAX ROTATION LOAD CAPACITY ON 90° VERTICAL TABLE @ 300MM: 30,000kg

MAX ROTATION LOAD CAPACITY ON 90° VERTICAL TABLE @ 1000MM: 12,000kg

MAX ROTATION LOAD CAPACITY ON 90° VERTICAL TABLE @ 2000MM: 6,000kg

MAXIMUM TILT / ROTATION CAPACITY OF 'UN-BALANCED' LOAD (TO PREVENT TIPPING / PARTS FAILURE)

MAX ROTATION LOAD CAPACITY ON 90° VERTICAL TABLE @ 300MM: 15,000kg

MAX ROTATION LOAD CAPACITY ON 90° VERTICAL TABLE @ 1000MM: 6,000kg

MAX ROTATION LOAD CAPACITY ON 90° VERTICAL TABLE @ 2000MM: 3,000kg

Unbalanced = elbow joints coming off the sides / heavy flanges on the end furthest away / not centered on table.

TILTING TIME: 60 seconds 0 - 90 degrees

DEGREE TABLE TILT RANGE: 110°

ROTATION SPEED: 0.01 to 0.5 RPM (**60 min rotation @ slowest / 2 minute rotation @ fastest**)

CONTROL: Cable pendant control (UP/DOWN/LEFT/RIGHT/STOP/EMERGENCY STOP)

ELECTRICAL SUPPLY: 30 amps 3-phase 380V to 440V 50/60Hz (32amp or 63amp fused rated plug required)

ADJUSTABLE HEIGHT SETTINGS: 4 pin settings (400mm between pins center to center)

MAXIMUM DIAMETER JOB CAPACITY: 4480mm

LENGTH: 3500mm

WIDTH: 2600mm

HEIGHT FROM FLOOR TO TOP OF TABLE ON LOWEST PIN SETTING: 1900mm

TABLE WIDTH: 2400mm (8x bolting slots that are 40mm mm wide)

MACHINE WEIGHT: 10,000kg

HEIGHT FROM THE FLOOR TO CENTRE OF 90° VERTICAL TILTED TABLE (LOWEST PIN 1): 1680mm

HEIGHT FROM TOP OF FRONT LEGS TO CENTRE OF 90° TILTED TABLE (LOWEST PIN 1): 1340mm

HEIGHT FROM FLOOR TO TOP OF TABLE ON LOWEST PIN SETTING 2: 1980mm (pin holes + 300mm)

LEG HEIGHT: 340mm

DISTANCE LEGS STICK OUT BEYOND VERTICAL TABLE: 1000mm

MAXIMUM JOB DIAMETER CAPACITY WITH 90° VERTICAL TABLE (LOWEST PIN 1): 3360mm

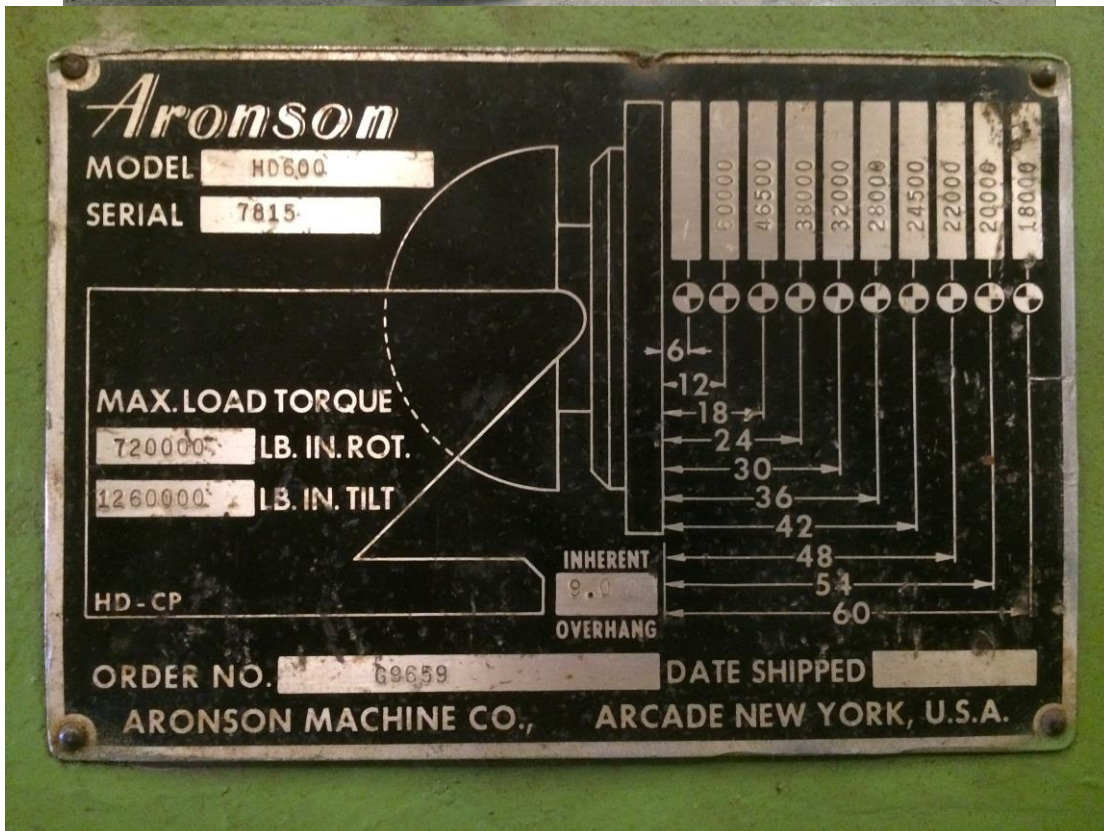
MAXIMUM JOB DIAMETER CAPACITY WITH 90° VERTICAL TABLE (PIN SETTING 2): 3960mm

MAXIMUM JOB DIAMETER CAPACITY WITH 90° VERTICAL TABLE (PIN SETTING 3): 4560mm

MAXIMUM JOB DIAMETER CAPACITY WITH 90° VERTICAL TABLE (HIGHEST SETTING 4): 5160mm



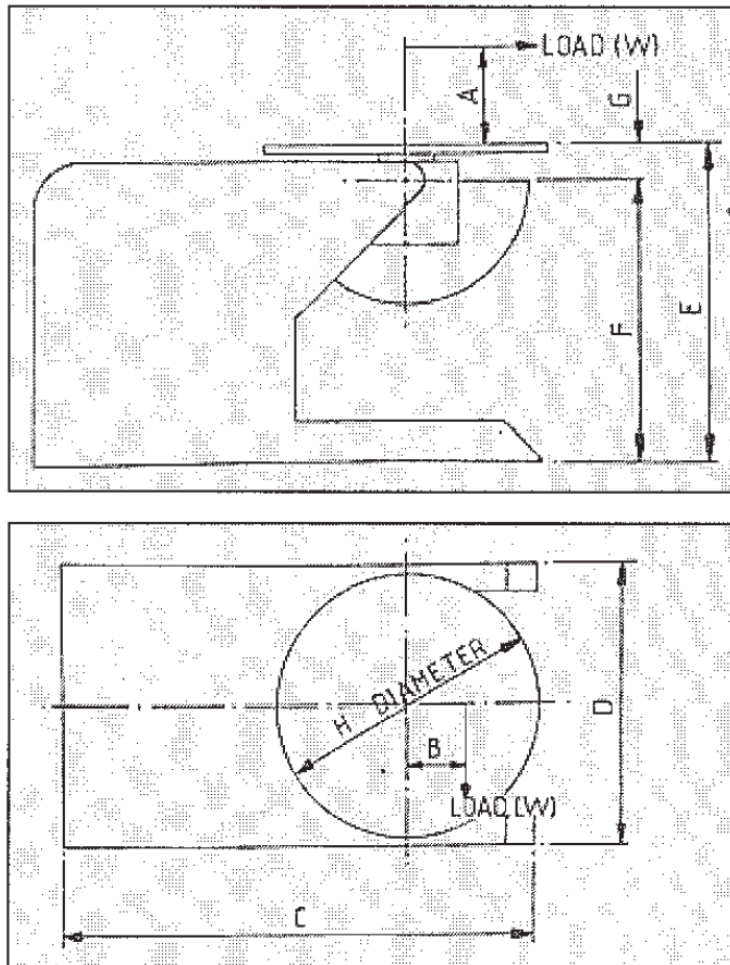
HIRE • SALES • REPAIR • REFURBISH



Spectrum Welding Supplies Ltd. Spectrum House, McGregor's Way, Chesterfield, Derbyshire, S40 2WB

T 01246 205267 E info@spectrumweldingsupplies.co.uk
W www.spectrumweldingsupplies.co.uk

Registered Office: Spectrum House, McGregor's Way, Chesterfield, Derbyshire, S40 2WB
Registered in England and Wales Company Registration No. 1732286
Vat Registration No. 401 5037 11



Rotation torque (R) is a calculation of Load (W) x Eccentricity (B)

Rotation Torque (R) = W x B = kg metres.

To calculate the tilt torque (T) it is important to use the full distance to the table pivot point by adding the Centre of Gravity (A) and table pivot distance (G).

Tilt Torque (T) = W x (A + G) = kg metres

Example: What weight can a 1/VP2 Positioner safely support with a centre of gravity of the load 200mm from the table face?

Answer:
$$\frac{\text{Tilt Torque (T)}}{200\text{mm} + \text{Distance (G)}} = \frac{600}{200 + 150} = 1.714 \text{ tonnes}$$